



NEWS

CRAFTED BY
THE
COMMUNITY

... Winter 2021...

FREE AND AFFORDABLE EVENTS IN OUR WARD

HERE ARE SOME CHRISTMAS EVENTS WE WILL BE HOSTING IN PRIORY COURT COMMUNITY CENTRE

11 PRIORY COURT E17 5NB

BIG LOCAL
COMMUNITY LUNCH
THURSDAY 16 DECEMBER
12PM-2PM

SANTA'S GROTTO
SUNDAY 19 DECEMBER
1.30PM-3.30PM

WINTER LIGHTS PARADE
SUNDAY 19 DECEMBER
4PM-5PM

Free Christmas Crafts in Lloyd Park

We funded the next The Conservation Volunteers' Christmas Craft event. You can now book your free place by going to the Eventbrite website and searching for The Conservation Volunteers' Christmas Crafts Family Event or go to www.eventbrite.co.uk/e/christmas-crafts-family-event-tickets-213479491907. The event is in Lloyd Park on 21st December 12pm-3pm. Book now!

funded by

Christmas Crafts in the park!

TCV The Conservation Volunteers Waltham Forest

WILLIAM MORRIS · BIG LOCAL ·

Tree dressing

DIY bird feeders

Decoration making

Mon 20th Dec Leyton Jubilee 12-3pm

Tues 21st Dec Lloyd Park 12-3pm

'RAPunzel!' panto comes to town!

RAPunzel! is this year's Walthamstow Trades Hall community pantomime and its organisers hope it will be Waltham Forest's most inclusive pantomime to date.

The show will run on six dates (including two 3pm matinee performances) before and after Xmas (20th, 21st, 22nd December and 27th, 28th and 29th December).

Read more about the panto on [page 4](#).

Free event for families!

Booking essential

Search "TCV Waltham Forest" on Eventbrite

*William Morris Big Local &
East End Trades Guild Present*

Indie

Advent

Calendar

Join us in supporting 24 local, independent businesses
across Waltham Forest this December!

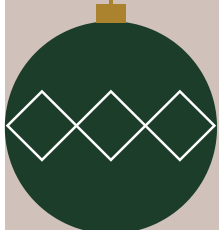
#wfindieadvent
@wmbiglocal @east_end_trades_guild

Support these Local Businesses!

Can you find each of these businesses this year?

Follow along on social media to find out how
you can get some amazing deals and offers this
holiday season!

- Yonder*
- Forest Wines*
- Harness and Mane*
- The Willow Tree Cafe*
- Hermanos Columbian Coffee*
- Jaunty Coffee*
- Temptations Ice Cream*
- Poetic Conscious*
- Grab & Go Food Truck*
- Wood Street Bakery*



Find out how WMBL is supporting local enterprise!

Waltham Forest chapter of the East End Trades Guild officially launched!



On 2 November, the WF chapter of the East End Trades Guild was officially launched with local businesses, community members, and WMBL partners in attendance! Oh yeah...and Leader of the Council Grace Williams too! We outlined all the work we've been doing and will continue to do in the community and solidified the relationship with the Council that we need to make for lasting change!

Follow us for more:  @east_end_trades_guild  @wmbiglocal

Interested in joining the Enterprise Team at WMBL?

Do you want to help your local business community? Do you have expertise or ideas for how we can grow our thriving community? Do you want to be a part of positive change for your local area?

We want you!



Email Milla at:
milla@wmbiglocal.org

LOCAL BUSINESS SPOTLIGHT



Temptations Milkshake & Ice Cream Bar

88 Forest Road
Walthamstow E17 6JQ

temptationsdessertsbar.co.uk

Temptations serves the thickest shakes you can get, from chocolates to ice creams and gelato. They've got the freshest waffles, pancakes & crepes too!

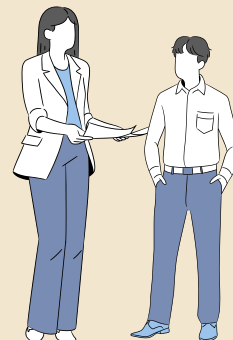
Vegan? No problem! They've got you covered with vegan ice creams, puddings, and non-dairy smoothies.

You can even bring in your four legged friend for Dog Friendly Ice Cream!



How to support a Kickstart Placement

Are you a small business wanting to support a local young person gain invaluable work experience and grow into their potential?



Are you a young person on Universal Credit and looking for an opportunity to showcase yourself and improve your skills?

The Guild might be able to help!

Contact:
jacquelyn@eastendtradesguild.org.uk

Free lantern making workshops

These free activities in Priory Court Community Centre are family friendly and for all ages.

GB CARNIVAL PRESENTS

WINTERLIGHTS PRIORY COURT LANTERN PARADE

Make a lantern at the workshops and be part of a magical parade to light up the darkest nights

LANTERN PARADE

Sunday 19 December

LANTERN MAKING WORKSHOPS

Mondays 15 Nov - 13 Dec

4-6pm: All ages welcome, no experience needed

6-8pm Youth Club

ALL DAY WORKSHOP

Saturday 18 December

Priory Court Community Centre, E17 5NB

Contact: Frank | 07957111512 | Teresa | 07958 040355

www.gbcarival.co.uk

Youth Club lets the kids take the lead



The Young Local youth club launched in September and since then it's been a buzz of activity down at Big Creative Academy on Thursday evenings. The youth club members shape the activities and have been given a budget to spend on a wish list of items. They've also been busy planning a tuck shop, special events, designed a logo and created a set of youth club rules to make it a positive space for all.



'RAPunzel!' panto comes to town!

RAPunzel! is this year's Walthamstow Trades Hall community pantomime.

The script is a modern re-imagining of the well-loved Brothers Grimm tale.

The show boasts a talented cast including local spoken word artist Sarah Lisney (founder of Poetic Conscience, who runs the monthly 'Poetivity' spoken word night) as RAPunzel and 19-year-old poet Fawaz Sajid, who plays Prince Ayaan MyTee.

Also featured are The Brothers Grimm, The Bruvvas Grime and Priti Nasti, The Witch, brilliantly played by local comedian, Ruby MacKellor. A memorable highlight will be local artist Danny Neon as the dame!

William Morris Big Local have given £1000 to help cover the costs of the production.

Organisers are donating 80 tickets free to local families in need which are being allocated by the local Salvation Army.

The show will run on six dates (including two 3pm matinee performances) before and after Xmas (20th, 21st, 22nd December and 27th, 28th and 29th December).

Youth Club art made by Munifa and Tahir



YOUNG LOCAL YOUTH CLUB
FOR 10-14Y

EVERY THURSDAY 5.30PM-7.30PM
BIG CREATIVE ACADEMY
38 CLIFTON AVENUE, WALTHAMSTOW, E17 6HL

AVATAR COMIC CORNER
SPORTS AND GAMES
MUSIC AND DANCE
GAMES CONSOLES
SNACK SHOP
PICNIC AREA

BY WILLIAM MORRIS
BIG LOCAL

IN bca
BIG CREATIVE ACADEMY

CONTACT THEBLAIRACADEMY@GMAIL.COM
FOR MORE INFORMATION

Prize wordsearch for under 12s

C M I C N L M Y I J E R T P E
 N S E Q O E L T T C A F Y M Q
 Z I P F R M R I N I V G P S I
 D U L C Y L P E W C N A A J Z
 E R Y T L K L A P D T I W W Y
 C T Y Z M O I V S H O K F I H
 A L Z A V C L N Y S F O L F T
 R A P E L O O N D C I E G G A
 G Y N S T U V Y E L E O X D P
 B E Q Q Y R E R G J I A N K M
 B J W X Y T I S O R E N E G Y
 N O I T C E F F A I Y M E T S
 C W V Q K S Q W W M M A U S F
 C U W U Q Y T U T F G M E Y S
 C H A R I T Y T R O P P A R Q

Kindness wordsearch

affinity	altruism	affection
charity	compassion	benevolence
empathy	generosity	courtesy
grace	kindliness	goodwill
mercy	rapport	love
		sympathy

To enter please email a photo to milla@wmbiglocal.org or post the page to WMBL, Big Creative Academy, 38 Clifton Avenue, Walthamstow E17 6HL.

Remember to add in your contact details!

Did you find all the answers? One correct entry picked at random before 1 January will win a Sodo pizza giftcard. Thank you Sodo! Congratulations to Luca, 8yrs, for winning the last Wordsearch! You will receive a Sodo gift card soon.



A Bloomin 'Eck Of a Year

2021 has certainly been a challenging year as we've all gone through the coming out of lockdown and slowly adjusted to the 'new normal'. Our outdoor spaces have become as important as ever and have been a lifeline for safe social interaction and for bringing people together when restrictions have been at their toughest.

Many local residents have used this year to bring colour and life to a variety of outdoor spaces and used WMBL funding to green up streets, housing blocks, community centres, schools and libraries for all to enjoy. Here's just a few installations that will continue to brighten up the area in 2022.



Erskine Road Planters



Tool Library Mural



Gaywood Road residents' planter



The Living Bench at Priory Court Community Centre



Planters outside Higham Hill Library

Photo credit @bloominstow

Photo credit @bloominstow

Walthamstow Tool Library new Winter opening times

The Walthamstow Tool Library will now open every Tuesday 3pm-6pm and Saturday 10am-1pm.

Why not get a special Christmas gift for your family and buy one year's membership for your loved one. To buy a membership go to: www.frpuk.org/community-work/tools/

And if you want to donate tools, email tools@frpuk.org to book a collection.



Pictured: Chrys, Fernan and Cllr Umar Ali

William Morris ward litter picking group

The residents of William Morris Close have been organising litter picking meetings, and as more people have become interested in joining the next meet-ups, the area has now been extended to the whole of William Morris ward.

We now have our own WhatsApp group for organising meetings.

The group aims to meet every month. Litter pickers and bags will be provided, but bring your own gloves if you have some.



PRIORY COURT COMMUNITY CENTRE

11 Priory Court, E17 5NB

Priory Court Community Centre is based on the Priory Court Estate in Walthamstow and supports a wide variety of community uses for all ages and cultures including a community garden. Hire space is also available for large and small events, training activities and meetings.

MONDAY

10am—12pm **Inspirations Coffee & Chat (Ladies Over 50)**. Contact the centre for more info
 1pm—2pm **Priory Court Food Rescue**: 15th & 29th Nov, 13th Dec
 1:30pm—3:30pm **Afternoon Tea**: 22nd Nov & 20th Dec
 6:30pm—8:30pm **Worth Unlimited Youth Club**: 11-19 years, see their website for more info; <https://worthunlimited.co.uk/waltham-forest>

TUESDAY

12pm—2pm **Bees Knees Sewing & Quilt Making**: New members are welcome. Skills preferred but not essential. £1 weekly fee, £15 yearly membership.
 5pm—8pm **UKA Karate**: Karate sessions for all levels. Age 5 upwards. Contact Charlie on 07908408211

WEDNESDAY

1pm—3pm **Community Garden Club**: Contact the centre for more details on how to join. (Occasional Saturday sessions)
 11pm—3pm **Senior Citizens Luncheon Club**: Please contact the centre for more information.
 4:30pm—6:30pm **Forest Youth Club**: 11-19 years, go to their website for more info; www.wfchub.org

FRIDAY

10am—11:30am **Under 5's Play Session**: Free drop in session for families with under 5's. Term time only. Contact Babybank@ltpcc.org.uk for more info.

SATURDAY

9am—12:30pm **Little Kickers**: Children are introduced to the basics of football in a play-oriented yet structured format. Go to their website for more information; <https://www.littlekickers.co.uk/>

Check our noticeboard for one off events and special activities.



PRIORY COURT COMMUNITY CENTRE

11 Priory Court, E17 5NB

OCCASIONAL EVENTS

COUNCILLOR SURGERY

10am—11am **William Morris Ward Councillor Surgery**: Speak to your local ward councillor about any issues or concerns you may have. The surgeries are informal, open sessions, with a confidential space available. The next dates are:



- **Friday 3rd December**

We hope the surgeries will return to normal in 2022

COMMUNITY LUNCH

10am—3pm **Free Community Lunch**: Come and join in the cooking from 10am or just come along for lunch and a chat at 1pm.

The next dates are:

- **Friday 19th November**
- **Friday 17th December**



Check our noticeboard for one off events and special activities.

For more information please contact:

020 8531 0380 or E-mail Samantha.murphy@walthamforest.gov.uk

You can reach us by using the W11 bus route which comes through the estate. Alternatively, the 123 and 158 buses stop on main roads surrounding the centre. We are also a short walk from Walthamstow Central and Blackhorse Road Station.



Guest recipe: Gingerbread Star Recipe by Today Bread



INGREDIENTS

656g plain flour
 1.6tsp bicarbonate of soda
 1.6tsp cinnamon
 200g butter
 280g soft brown sugar
 1 ½ eggs
 136g golden syrup
 3tsp ground ginger
 Makes approx. 44 biscuits

- Mix all the ingredients together in a stand mixer using the paddle attachment.
- Wrap the dough in cling film and leave it in the fridge overnight.
- Preheat the oven to 170°C and line a baking tray with greaseproof paper.
- Roll dough out to a 3cm thickness on a lightly floured surface.
- Cut into desired shapes and place on the baking tray, leaving a gap between them.
- Bake in the oven for 12 minutes, until lightly golden brown.
- Allow them to cool for 10 minutes before decorating.

WE HAVE TWO TODAY BREAD GIFT CARDS TO SHARE WITH OUR READERS. IF YOU POST A PICTURE OF YOUR DECORATED CHRISTMAS COOKIES ON INSTAGRAM, TAG @WMBIGLOCAL AND WE WILL ADD YOU TO OUR PRIZE DRAW!

— TODAY BREAD —
 ARTISAN. SOURDOUGH. LOCAL



We still have one free meal voucher from our last Newsletter competition. If you would like to share your family recipe with us, email milla@wmbiglocal.org. You will win a Dabbadrop meal for four people if we publish it.





The Salvation Army on Forest Road is appealing for new toys to help brighten up Christmas for families facing extreme hardship. Last year they distributed over 1500 gifts to the most vulnerable families and children in the area and have once again turned their attention to this most valuable of projects.

Please donate your **new** toys (unwrapped) and gifts to the Salvation Army Charity Shop at 434 Forest Road between 10.00am-4.00pm weekdays, and 10.00am-2.00pm on a Saturday.

For more information please contact Julie at the Salvation Army on 0208 521 4980 or email julie.pell@salvationarmy.org.uk

Games Club has started again

Our popular free of charge Games Club has returned. We play classic card and board games every Tuesday 2pm-5pm at 434 Forest Rd E17 4PY, access through the Salvation Army charity shop. Pop by to try out your favourite games! Refreshments provided. All ages are welcome, and under 16s can attend accompanied by an adult.

GAMES CLUB

EVERY TUESDAY 2PM - 5PM
WILLIAM MORRIS ROOM IN SALVATION ARMY BUILDING
434 FOREST RD, WALTHAMSTOW E17 4PY

COME AND PLAY CLASSIC, TRADITIONAL BOARD/CARD GAMES IN A RELAXED AND FRIENDLY ENVIRONMENT

ALL WELCOME!

REFRESHMENTS PROVIDED
UNDER 16S MUST BE ACCOMPANIED BY AN ADULT

WILLIAM MORRIS . BIG LOCAL .

CONTACT [MILLA@WMBIGLOCAL.ORG](mailto:milla@wmbiglocal.org) FOR MORE INFO

Walthamstow Food Bank locations

Whether you need to use a food bank or wish to donate to one, here are the local ones:

Eat or Heat:

Quaker House, 1A Jewel Road, London E17 4QU
www.eatorheat.org / 0800 772 0212

Rukhsana Khan Foundation:

<https://www.rukhsanakhanfoundation.org>
rukhsanakhanfoundation@outlook.com /
07980351351

PL84U AL SUFFA:

Monday - Wednesday 12-2pm

Epicentre

41 West Street, Leytonstone, E11 4LJ

www.pl84ualsuffa.co.uk

07539 364 110

The Lloyd Park Children's Charity Baby Bank:

<https://www.tlpcc.org.uk/baby-bank/>

Email babybank@tlpcc.org.uk

WE HOPE THAT YOU ENJOYED OUR COMMUNITY NEWSLETTER!

IF YOU ARE INTERESTED IN FINDING MORE ABOUT US, GO TO WWW.WMBIGLOCAL.ORG

EMAIL [MILLA@WMBIGLOCAL.ORG](mailto:milla@wmbiglocal.org), IF YOU WANT TO KNOW MORE ABOUT VOLUNTEERING.

FOR GENERAL ENQUIRIES, CALL GABRIEL: 07947 766251

Follow us on Twitter, Instagram and Facebook @WMBigLocal